

# Pressure Transmitter STK131



## Area for application

Compressed air  
 Non-aggressive gases  
 Vacuum technology  
 Pneumatics

## Features

- Fixed measuring ranges up to 600bar
- Compact construction
- Simple mounting
- Excellent long term stability
- Long operational life
- Low price
- Option: HART-Communication  
LED display

SENSE pressure transmitter STK131 with ceramic thick film sensor is suitable for a wide variety of liquids, gases, and vapors. It is a compact, economical system that provides measurement in gauge or absolute measurement.

Nominal Pressure Ranges	
From	0...1bar
Up to	0...600bar
Mounting Simplicity	
The STK131 can be mounted in any orientation (Vertical, Horizontal, or inverted) without affecting its performance. M20X1.5 process connection (standard, others on request), 304SS 4 to 20mA output 10.5 to 45VDC power supply	

## Technical data

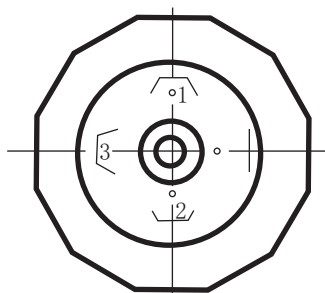
Output signal	
2-wire	4...20 mA (standard), Option: HART-protocol
3-wire	1...5 V (optional)
Performance	
Communication resistance (for HART-protocol)	250 Ω
Accuracy	Nominal range 0.2%
	0.25% accuracy for range trundown 1.5:1
	0.5% accuracy for range trundown 2:1
Permissible load	≤ 1000 Ω
Long term stability	Typically 0.15% per year
Rise time	200 ms (without consideration of electronic damping)
Adjustability	Inside two push buttons
Thermal effect	± 0.02% FS/K

<b>Electrical protection</b>										
Insulation resistance	>250M $\Omega$									
Short-Circuit protection	Permanent									
Miswiring	No damage, and no function									
Overtoltage protection	500 V									
Intrinsic safety	Exia II CT4~T6									
Power supply influence	Negligible									
Vibration effect	<0.01% of URL /g when tested 200Hz in any axis relative									
Installation position	Any									
<b>Permissible temperature</b>										
Medium	-30...85 $^{\circ}$ C									
Environment	-30...85 $^{\circ}$ C									
Storage	-30...85 $^{\circ}$ C									
<b>Measuring range</b>										
Pressure gauge(bar)	1	2	5	10	20	50	100	200	400	600
Max. Permissible Overload(bar)	4	5	12	25	50	120	250	500	650	880
Absolute Pressure(bar)	1	2	5	10	20	50				
Max. Permissible Overload(bar)	4	5	12	25	50	120				
<b>Power supply(polarity protected)</b>										
Supply voltage	12.5...45 VDC									
<b>Process connections</b>										
Standard	M20X1.5									
Optional	G1/2/NPT1/2/NPT1/4/G1/4 Others: on request									
<b>Materials</b>										
Housing	304SS									
Sensor	Ceramics Al <sub>2</sub> O <sub>3</sub>									
Seals	FPM/Others: on request									
Process connection	304SS									
<b>Display(option)</b>										
Type	4-digit, red LED display, digit height 7mm, digit width 4.85mm									
Range	-1.9.9.9. To 9.9.9.9.									

Others	
Ingress protection	IP65
Weight	Approx. 140g

### Electrical Connection

#### Pin configuration



#### 2-wire system:

1: Supply+

2: Supply-

3: GND

Power Supply: 12.5 to 45VDC

Output Signal: 4 to 20mA

#### 3-wire system:

1: Supply+

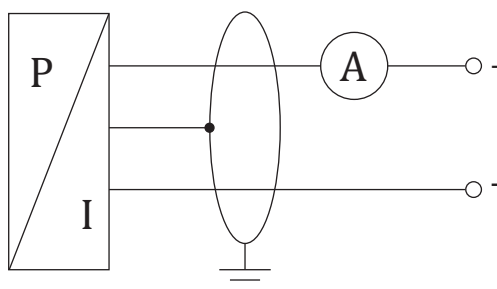
2: Supply- (Signal-)

3: Signal+

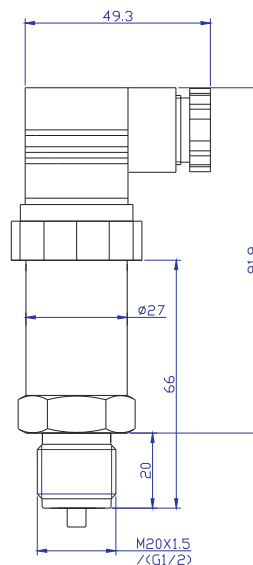
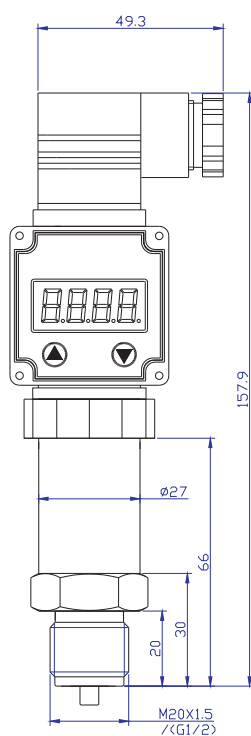
Power Supply: 12.5 to 45VDC

Output Signal: 1 to 5V

#### Wiring diagrams

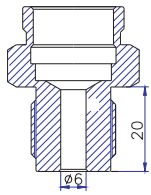


### Dimensions



### Mechanical Connection

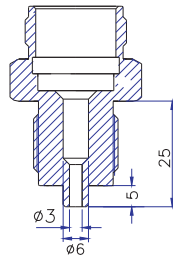
Standard



M20X1.5 EN

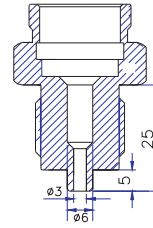
Ordering code: B

Optional



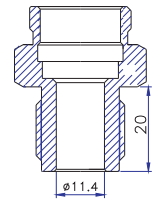
M20X1.5 DIN

Ordering code: D



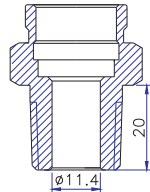
G1/2 " DIN

Ordering code: F



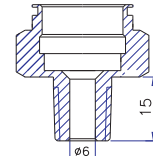
G1/2 " EN

Ordering code: G



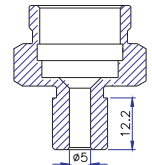
1/2 " NPT

Ordering code: N



1/4 " NPT

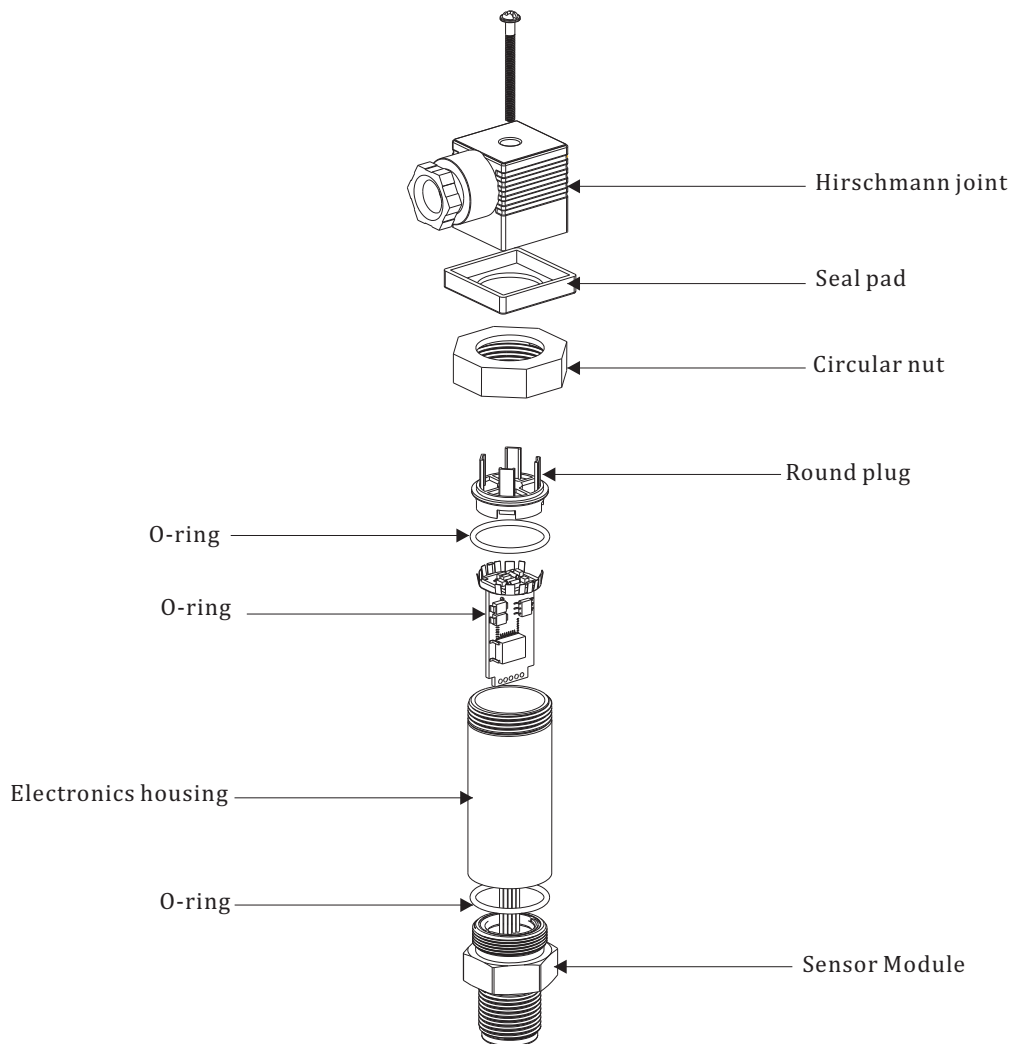
Ordering code: P



G1/4 "

Ordering code: H

### Dimensions



## Ordering code STK131

For example:STK131-2GYNCF1B11HS...-40...40Kpa

Model	Suffix Codes	Description
<b>Output</b>	※2-----	4...20mA/2-wire system
	3-----	1...5V/3-wire system
<b>Pressure</b>	※ G-----	Gauge
	A-----	Absolute
<b>Sensor type</b>	※Y-----	Ceramic piezoresistive sensor
	K-----	Silicon piezoresistive sensor
	Q-----	Customer
<b>Indicator</b>	※ N-----	Without display
	D-----	With LED display
<b>Display Mode</b>	※ C-----	Current
	R-----	% range
	P-----	PV
<b>Seals</b>	※ F-----	FKM
	C-----	Customer
<b>Electrical connection</b>	※ 1-----	4 pin
	2-----	Others
<b>Process Connection</b>	B-----	M20X1.5 EN
	※D-----	M20X1.5DIN
	F-----	G1/2 " DIN
	G-----	G1/2 " EN
	N-----	1/2 " NPT
	P-----	1/4 " NPT
	H-----	G1/4 " EN
C-----	Customer	
<b>Wetted parts material</b>	※ 1-----	SUS304
	2-----	Others
<b>Label</b>	※ 1-----	Standard
	0-----	Customer
<b>Communication</b>	※ H-----	HART-protocol
	R-----	Rs232 Interface
<b>Explosion</b>	※ S-----	Intrinsically safety
	F-----	Flameproof
<b>Range</b>		Local measurement range Ceramic piezoresistive sensor:0~0.1~60Mpa Silicon piezoresistive sensor: -0.1~0~0.035~70MPa

This ordering code contains product specification; properties are not guaranteed. Subject to change without notice.